

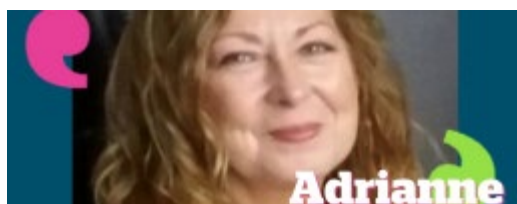


June 2020 Update

This month we have been busy finalising our Annual Report. We have also welcomed two new members to the Healthwatch Warrington team.

Our Virtual Voices as always continues to grow and we continue to gain valuable insight. We have been able to gain some great insight into GP Access and other areas of Health & Social Care.

[Read our Annual Report](#)



Volunteer & Enter & View Lead

Adrienne initially joined Healthwatch Warrington as a volunteer after



YP Outreach/ Engagement Lead

From our work last year around Young people's Mental Health,

retiring from the NHS. She had previously trained as a nurse and her career spanned 36 years, during which time she was employed in various roles. Her last job role in the NHS was Head of Clinical Quality and Patient Experience, She always tried to seek the views of service users and carers when planning, delivering and reviewing services and care.

Adrienne has been fortunate to work with some amazing volunteers, both with the NHS and Healthwatch Warrington.

"I would encourage anyone to try volunteering because the opportunities are many and varied."

Find out more about volunteering possibilities please email Adrienne.

Contact Adrienne

Healthwatch Warrington has been awarded additional income. This funding will allow us to continue this work with Children and Young People for CCG.

Julie Howson has taken on the role, she has worked as an advocate for 10 years with young carers and is a qualified counsellor.

"We need a culture where Children and Young People can confidently access adequate mental health support within a suitable timescale, where they will feel confident and safe to speak and be listened. Inclusive of early signs of mental health issues before it escalates'."

If you want to find out more about this project, please email Julie.

Contact Julie



Andy became the NHS complaints Advocate in September this year and has already engaged with a number of Warrington ICAS' existing clients and looks forward to support new clients.

He is passionate about ensuring that people in Warrington are supported through the NHS complaints process and are empowered to understand their rights.

What is NHS Complaints Advocacy?

Although most people using the health service are happy with their care and treatment, things can sometimes go wrong. If you're not satisfied with the service you've experienced from a hospital, doctor, dentist, local surgery or any other NHS provider, you are entitled to complain about it.

Find out more about our Advocacy Service

Local Information



Warrington ESA

Warrington is now a designated Enhanced response area following a government announcement, due to the continued prevalence of the Delta variant of coronavirus.

Cases are rising rapidly in Warrington, driven by the Delta variant. The government therefore made the decision yesterday, Monday 14 June, to make Warrington an enhanced support package area.

This means that in Warrington, over the coming days and weeks, there will be, as a minimum:

- >An enhanced presence of community engagement and street teams, speaking to residents to make sure they are testing themselves routinely and are taking up the vaccine when offered

- >Supervised in-school testing and the reintroduction of face coverings in educational settings.

- >Surge PCR testing in some specific areas and settings

- >Enhanced delivery of local and targeted communications, including roaming ad vans and billboard messages

[Read More](#)



Moobs & Boobs fundraising for Breast Cancer Care - Bespoke Luxury Hamper Raffle

Win a 'money can't buy bespoke picnic basket' this wonderful Fortnum & Mason Hamper includes Champaign & Margaritas

Raffle open Monday 7th June until Thursday 8th July – Winner will be drawn at the Pickering Arms Pub, Thelwall, Afternoon Tea Event

Want to be in with a chance to win? Click the link and purchase your [raffle ticket](#)

[Get Your Tickets](#)

Updates



and



Virtual Voices

last months winner for Virtual Voices was Veronica Rathbone. She was the lucky winner of £20 voucher gift voucher to spend in Warrington Market.

If you would like to get involved and have your say with the chance to win a voucher– Simply sign up to Virtual Voices. Sign up today and you have the choice to take part each month.

This months survey is about medication reviews, men's mental health & women's health.

[Take Survey](#)

Peoples Panel

Our Peoples Panel meet monthly via Zoom. Each month there a different speaker and a chance to discuss health and social care matters that are arising in Warrington.

We are continuously recruiting for Warrington residents to join the panel in order to have an even more diverse group of people represented.

If you would like to contribute to the panel. Please apply below.

[Apply to Peoples Panel](#)

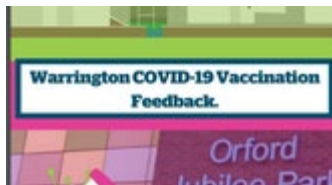
Our Reports



GP Access Report

We asked our Virtual Voices about their experiences with GP Access, as we have received a lot of feedback regarding this issue in Warrington. We have collated this information and shared throughout our networks. Our report is available below.

[Read Report](#)



COVID Vaccine Feedback

Our Mass Vaccination Centres have been buzzing since the introduction of the COVID 19 Vaccines. We have been collating information from the centres and have had over 2800 responses. Below is the report on our findings of the experiences of Warrington Residents

[Read Report](#)



PCN Changes in Care Homes

Warrington CCG asked us to carry out engagement and consultation on the changes to PCN and GP changes in Care homes. We held Informational sessions for each of the PCNS. Our results from the consultations are below as well as our recommendations.

[Read Report](#)



We have started to work towards our priorities for 2021. Adrienne & Julie are welcome additions to the Healthwatch Warrington Team and are going to be a welcome asset to assist in achieving results.

We have just launched a survey about Young People's Mental Health to

teachers. This will allow us to get a better understanding of how they think students are coping and assess whether teachers think they can spot any issues and are able to support them. Early intervention is key..

We are continuing our COVID Research and working towards to supporting carers and highlighting issues of carers strain.

If you wish to get involved or share your views please [contact us](#).

Other Information

WHH Charity



NHS
Warrington and
Halton Hospitals
NHS Foundation Trust

Registered Charity Number: 1051858

LOTTERY

£10,000 ANNUAL JACKPOT!

PLUS 10 x £500 PRIZES



Only
£2
Per Play

- 1 x £1,000 Weekly Prize
- 29 Additional weekly cash prizes totalling £600 every week (1 x £100, 4 x £50, 4 x £25, 20 x £10)

THE WHH CHARITY LOTTERY

has been established to help raise funds to support YOUR local hospital. Not only does it give YOU the opportunity to win some fantastic cash prizes it will contribute to providing MORE for the patients at Warrington and Halton Hospitals.

Money raised through YOUR support of the lottery will directly support the hospital through providing additional equipment and facilities that benefit both patients and staff.

Any help and support YOU and the WHH Charity can give to support patient care is greatly appreciated by our clinical colleagues.

Thank you and good luck!

☎ 01925 662666   

The WHH Charity, Warrington Hospital, Lovely Lane, Warrington , WA5 1QG

4pm-7pm.
Or at our Golden Square Information Centre Tues-Sat 10am-2pm.
Thank you for your support

Up-to-date Shopping List for all donations

We are running really low on these items ...

Don't Forget ...

You can also make an online monetary Gift Donation. Please visit our website for details.

Donations accepted at our Warehouse 9 Tanning Court Walsley Hill Mon-Thurs 4pm-7pm & Golden Square Information Centre Tue-Sat 10am-2pm

Warrington Foodbank - Tel: 07583 080 521 - Email: info@warrington.foodbank.org.uk Website: www.warrington.foodbank.org.uk - Registered Charity 1152525

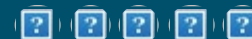
THANK YOU

MONDAY	TUESDAY	WEDNESDAY	THURSDAY	FRIDAY	MONDAY	TUESDAY	WEDNESDAY	THURSDAY	FRIDAY
<p>POP-IN FOR NEW REFERRALS OR 1-2-1 SUPPORT AVAILABLE DAILY 10AM - 11 AM</p>	<p>APPOINTMENTS FOR 1-2-1 SUPPORT AVAILABLE PLEASE SEE A MEMBER OF STAFF</p>	<p>CARE OPEN DAILY 11AM-3PM HOMEMADE DAILY SPECIALS ONLY £2.50</p>	<p>8AM POSITIVE THOUGHTS** 10AM COOKERY CLASS 10-10:30AM READ TO UNWIND 10PM DRAMA 2PM MEN'S PEER SUPPORT</p>	<p>8AM POSITIVE THOUGHTS** 10AM TEA AND TALK 10-10:30AM READ TO UNWIND 10PM DRAMA 1.30PM ART PROJECT 1.30PM BINGO</p>	<p># TEA AND TALK 10AM BOOK SWAP CLUB 10-10:30AM ART PROJECT 10-10:30AM ART PROJECT 10-10:30AM ART PROJECT 10-10:30AM ART PROJECT</p>	<p>11AM BOOK SWAP CLUB 1PM POSITIVE THOUGHTS** 1.30PM ART PROJECT 2PM MEDIA GROUP**</p>	<p>11AM BBQ PARTY (bookable event, weather dependent) 1.30PM NICKY PRICE 1 AM I CAN 2PM SPEAK UP</p>	<p>8AM POSITIVE THOUGHTS** 10AM COOKERY CLASS 10-10:30AM READ TO UNWIND 10PM DRAMA 2PM MEN'S PEER SUPPORT</p>	<p>8AM POSITIVE THOUGHTS** 10AM TEA AND TALK 10-10:30AM READ TO UNWIND 10PM DRAMA 1.30PM BINGO</p>
<p>TEA AND TALK 10AM BOOK SWAP CLUB 10-10:30AM ART PROJECT 10-10:30AM ART PROJECT</p>	<p>9-10AM ENERGY EFFICIENCY COURSE (ALL DAY) 1.30PM ART PROJECT 2PM MEDIA GROUP**</p>	<p>10AM GARDENING CLUB 2PM SPEAK UP</p>	<p>8AM POSITIVE THOUGHTS** 10AM COOKERY CLASS 10-10:30AM READ TO UNWIND 10PM DRAMA 2PM MEN'S PEER SUPPORT 2PM GARDEN TEA PARTY</p>	<p>8AM POSITIVE THOUGHTS** 10AM TEA AND TALK 10-10:30AM READ TO UNWIND 10PM DRAMA 1.30PM BINGO</p>	<p># TEA AND TALK 10AM BOOK SWAP CLUB 10-10:30AM ART PROJECT 10-10:30AM ART PROJECT 10-10:30AM ART PROJECT</p>	<p>11AM BOOK SWAP CLUB 1PM POSITIVE THOUGHTS** 1.30PM ART PROJECT 2PM MEDIA GROUP**</p>	<p>10AM GARDENING CLUB 1.30PM NICKY PRICE 1 AM I CAN 2PM SPEAK UP</p>	<p>8AM POSITIVE THOUGHTS** 10AM COOKERY CLASS 10-10:30AM READ TO UNWIND 10PM DRAMA 2PM MEN'S PEER SUPPORT</p>	<p>8AM POSITIVE THOUGHTS** 10AM TEA AND TALK 10-10:30AM READ TO UNWIND 10PM DRAMA 1.30PM BINGO</p>
<p>TEA AND TALK 10AM BOOK SWAP CLUB 10-10:30AM ART PROJECT 10-10:30AM ART PROJECT</p>	<p>11AM BOOK SWAP CLUB 1.30PM ART PROJECT 2PM MEDIA GROUP**</p>	<p>10AM GARDENING CLUB 1.30PM NICKY PRICE 1 AM I CAN 2PM SPEAK UP</p>	<p>8AM POSITIVE THOUGHTS** 10AM COOKERY CLASS 10-10:30AM READ TO UNWIND 10PM DRAMA 2PM MEN'S PEER SUPPORT</p>	<p>8AM POSITIVE THOUGHTS** 10AM TEA AND TALK 10-10:30AM READ TO UNWIND 10PM DRAMA 1.30PM BINGO</p>	<p># TEA AND TALK 10AM BOOK SWAP CLUB 10-10:30AM ART PROJECT 10-10:30AM ART PROJECT 10-10:30AM ART PROJECT</p>	<p>11AM BOOK SWAP CLUB 1PM POSITIVE THOUGHTS** 1.30PM ART PROJECT 2PM MEDIA GROUP**</p>	<p>10AM GARDENING CLUB 1.30PM NICKY PRICE 1 AM I CAN 2PM SPEAK UP</p>	<p>8AM POSITIVE THOUGHTS** 10AM COOKERY CLASS 10-10:30AM READ TO UNWIND 10PM DRAMA 2PM MEN'S PEER SUPPORT</p>	<p>8AM POSITIVE THOUGHTS** 10AM TEA AND TALK 10-10:30AM READ TO UNWIND 10PM DRAMA 1.30PM BINGO</p>

Day Accredited Course - Too book your place please speak to a member of staff or call 01925 652204 (£100 cashback for anyone unemployed and in receipt of benefits) group run by an external organisation, Referral needed. For more information please speak to a member of staff or call 01925 652204.

to Covid restrictions the Day Service is still running on limited capacity. If you are interested in joining any of our sites/courses please call to book a place on 01925 652204.

Copyright Healthwatch England 2017
Member of Healthwatch Warrington
80 London Road
London, SE1 6LH
United Kingdom



mailto:warringtonbounces+u...fakehash@healthwatchcrm.co.uk

Please do not publish or reproduce this newsletter in full.